

AUSTRALIA'S POPULATION MAP

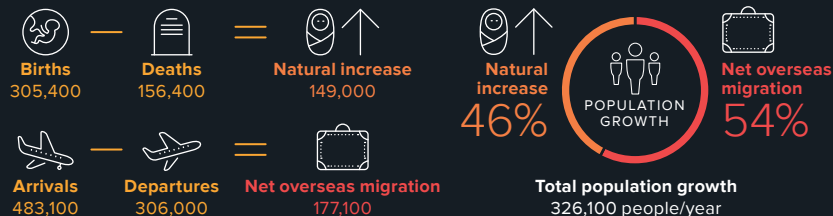
HOUSEHOLDS



EMPLOYMENT



POPULATION

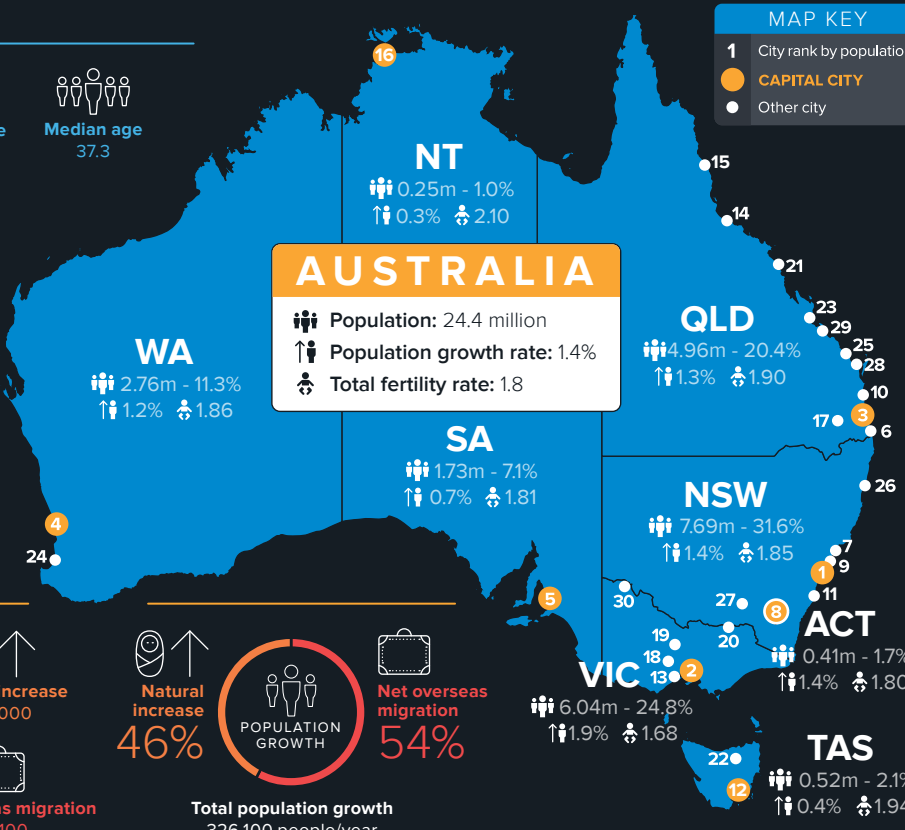


MAP KEY

- 1 City rank by population
- CAPITAL CITY
- Other city

CITY BY POPULATION

#	CITY	'000
1	SYDNEY	5,014
2	MELBOURNE	4,638
3	BRISBANE	2,354
4	PERTH	2,122
5	ADELAIDE	1,303
6	Gold Coast	634
7	Newcastle	441
8	ACT/CANBERRA	396
9	Central Coast	329
10	Sunshine Coast	308
11	Wollongong	295
12	HOBART	222
13	Geelong	189
14	Townsville	184
15	Cairns	151
16	DARWIN	147
17	Toowoomba	116
18	Ballarat	102
19	Bendigo	95
20	Albury - Wodonga	91
21	Mackay	88
22	Launceston	87
23	Rockhampton	83
24	Bunbury	79
25	Bundaberg	71
26	Coffs Harbour	69
27	Wagga Wagga	57
28	Hervey Bay	53
29	Gladstone	52
30	Mildura	51



© 2016 Mccrindle 2016 | Source: Mccrindle, ABS

AUSTRALIA'S GENERATIONAL PROFILE



Life expectancy at birth

♂ 80.3 ♀ 84.4



Median age of parents (new births)

♂ 33.0 ♀ 30.9



Median age first marriage

♂ 29.9 ♀ 28.3



Total fertility rate

Australia: 1.8 OECD: 1.8

POPULATION BY YEAR OF BIRTH

