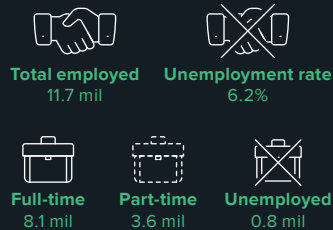


AUSTRALIA'S POPULATION MAP

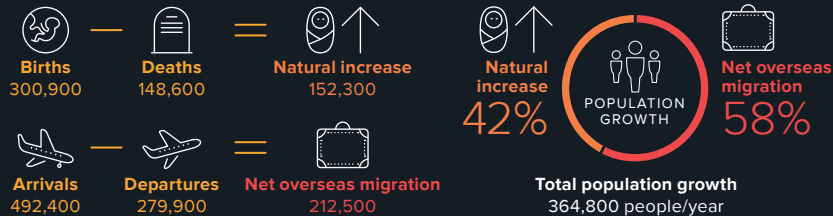
HOUSEHOLDS



EMPLOYMENT

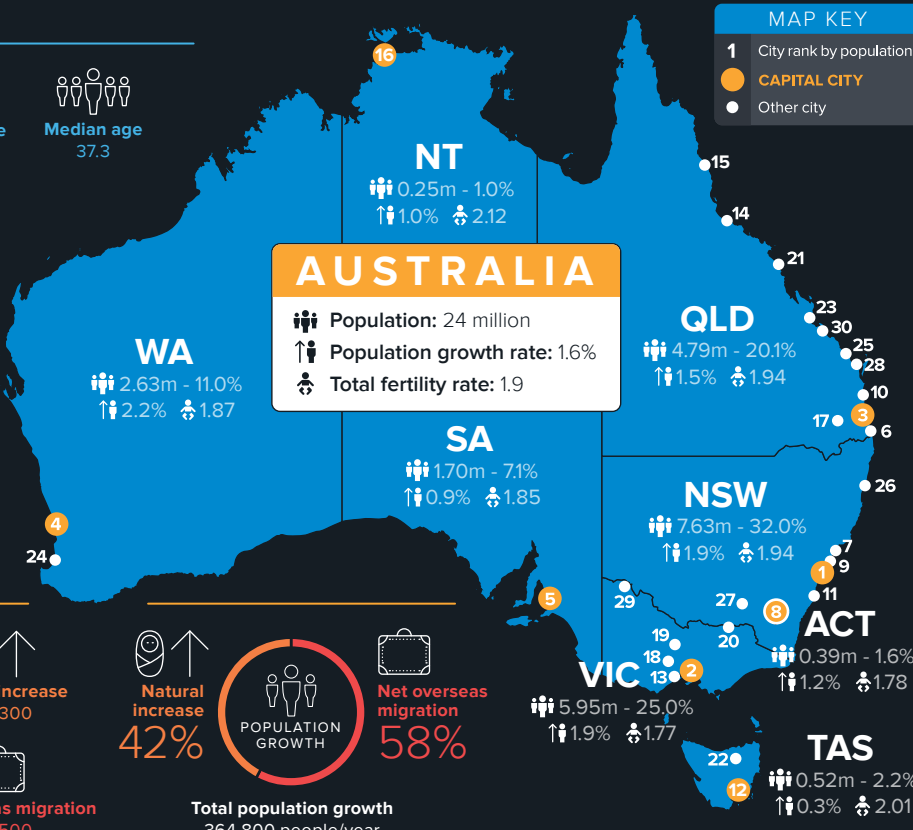


POPULATION



MAP KEY

- 1 City rank by population
- CAPITAL CITY
- Other city



CITY BY POPULATION

#	CITY	'000
1	SYDNEY	4,919
2	MELBOURNE	4,539
3	BRISBANE	2,329
4	PERTH	2,107
5	ADELAIDE	1,318
6	Gold Coast	629
7	Newcastle	435
8	ACT/CANBERRA	394
9	Central Coast	326
10	Sunshine Coast	303
11	Wollongong	293
12	HOBART	220
13	Geelong	187
14	Townsville	184
15	Cairns	151
16	DARWIN	144
17	Toowoomba	116
18	Ballarat	100
19	Bendigo	93
20	Albury/Wodonga	89
21	Mackay	88
22	Launceston	86
23	Rockhampton	83
24	Bunbury	77
25	Bundaberg	71
26	Coffs Harbour	69
27	Wagga Wagga	56
28	Hervey Bay	52
29	Mildura	51
30	Gladstone	50

© Copyright McCrindle 2015 | Source: McCrindle, ABS

AUSTRALIA'S GENERATIONAL PROFILE



Life expectancy at birth

♂ 80.0 ♀ 84.3



Median age of parents (new births)

♂ 33.0 ♀ 30.8



Median age first marriage

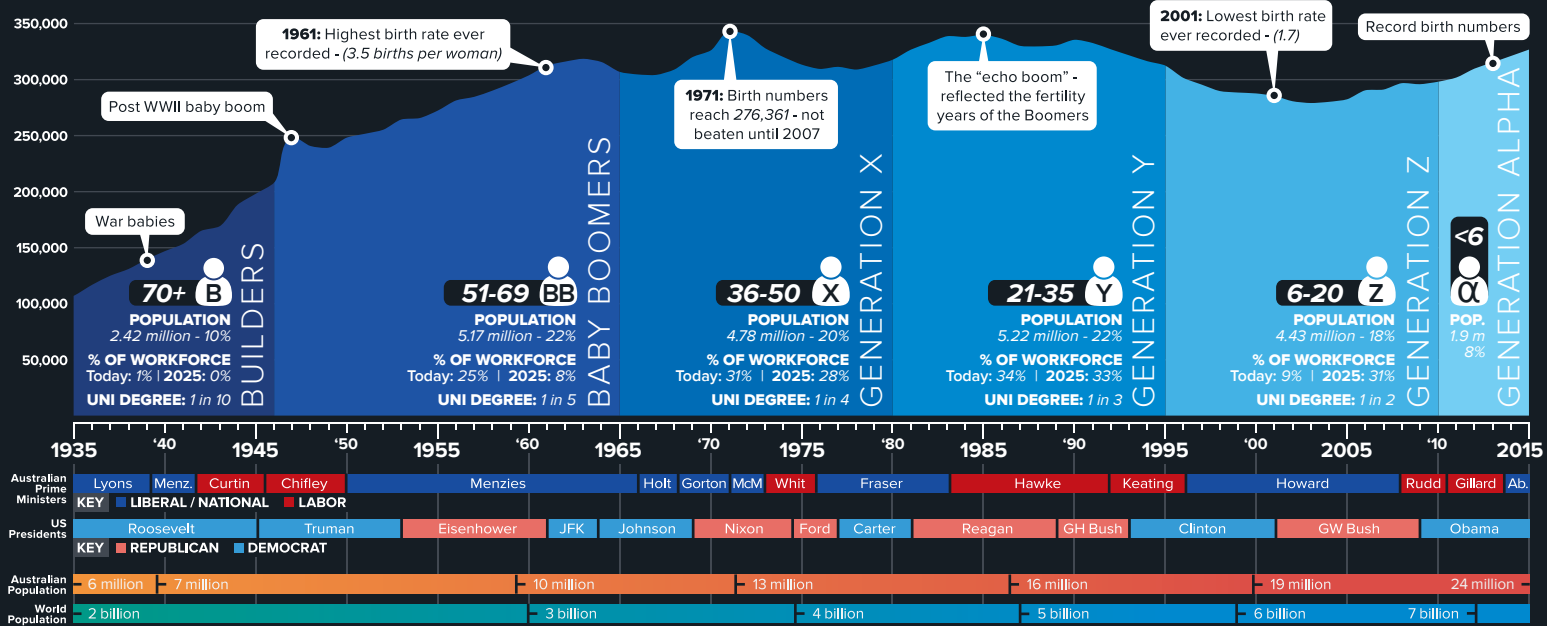
♂ 29.9 ♀ 28.3



Total fertility rate

Australia: 1.9 OECD: 1.7

POPULATION BY YEAR OF BIRTH



mccrindle
FORECASTS • STRATEGY • RESEARCH

FORECASTS: Understanding the times, tracking the trends
STRATEGY: Engaging communities, advising organisations
RESEARCH: Insightful research, innovative communications



- SOcial RESEARCH
- CUSTOMER SEGMENTATION
- RESEARCH PRESENTATIONS
- DEMOGRAPHIC ANALYSIS
- RESEARCH VISUALISATION

POWERED BY
RESEARCH VISUALISATION

researchvisualisation.com

mccrindle.com.au