

The AGED CARE PUZZLE

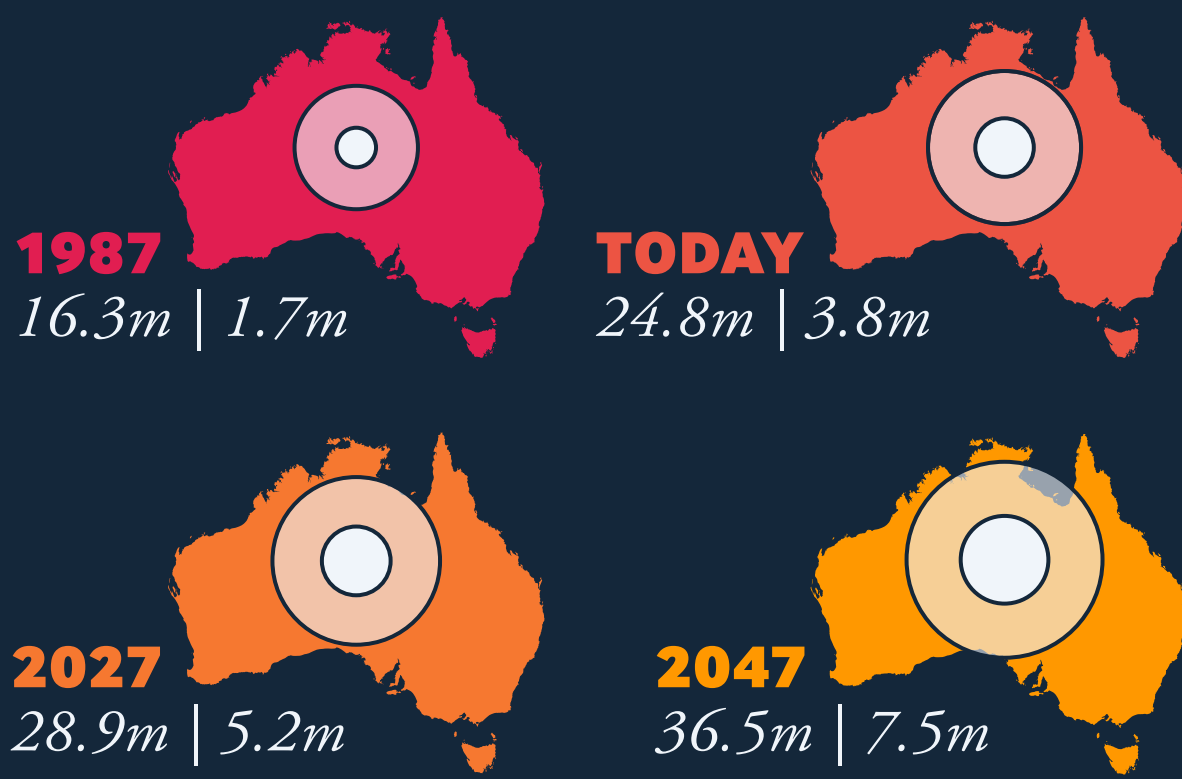
DEMAND

VS

SUPPLY

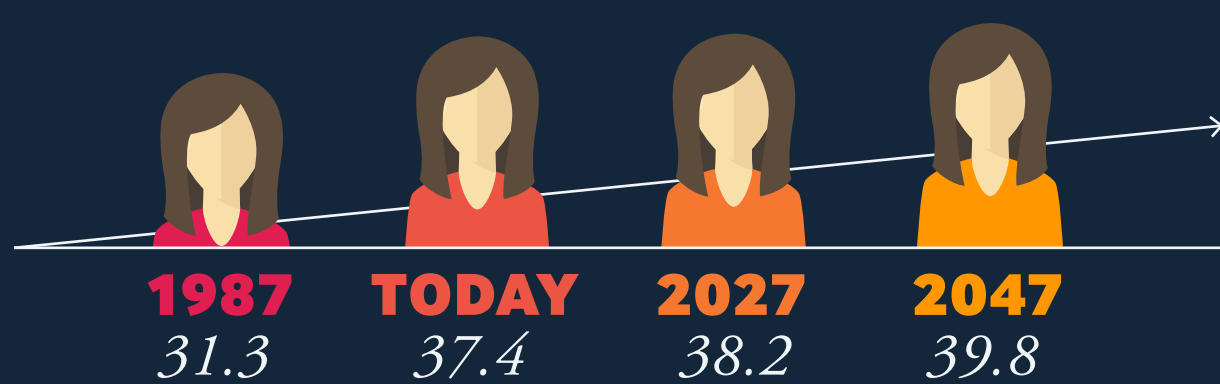
GROWING POPULATION

Australian | 65+ Population



AGEING SOCIETY

Median Age



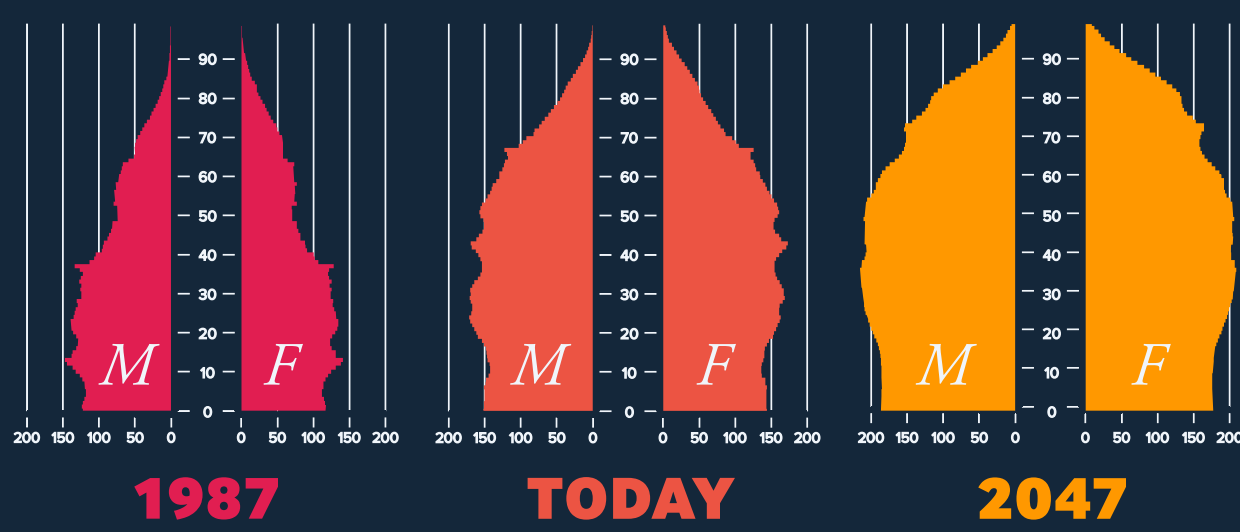
INCREASED LONGEVITY

Life Expectancy at Birth

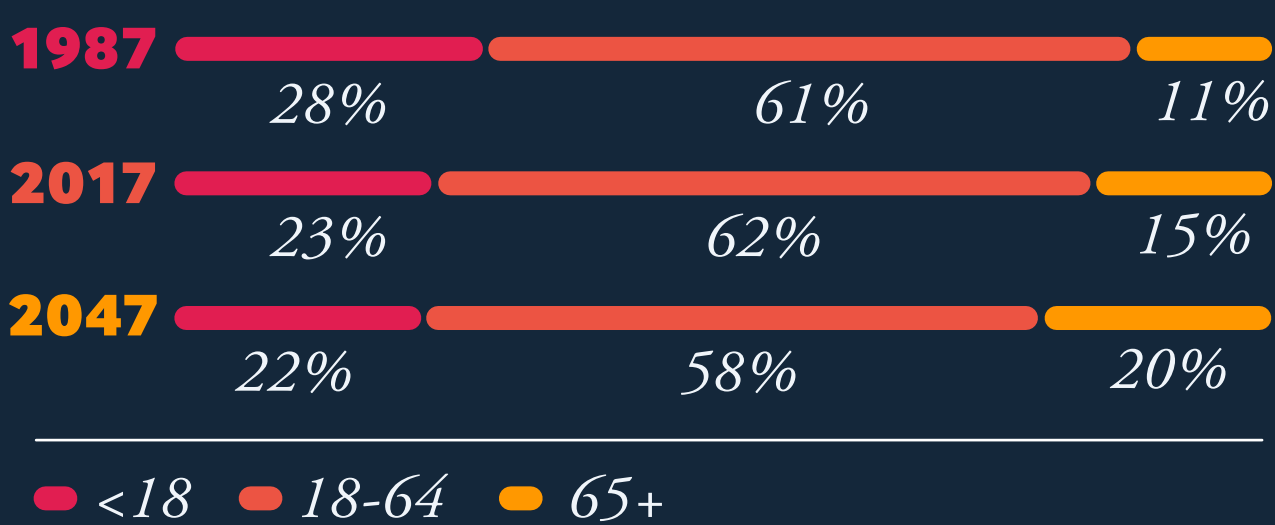


POPULATION PYRAMIDS

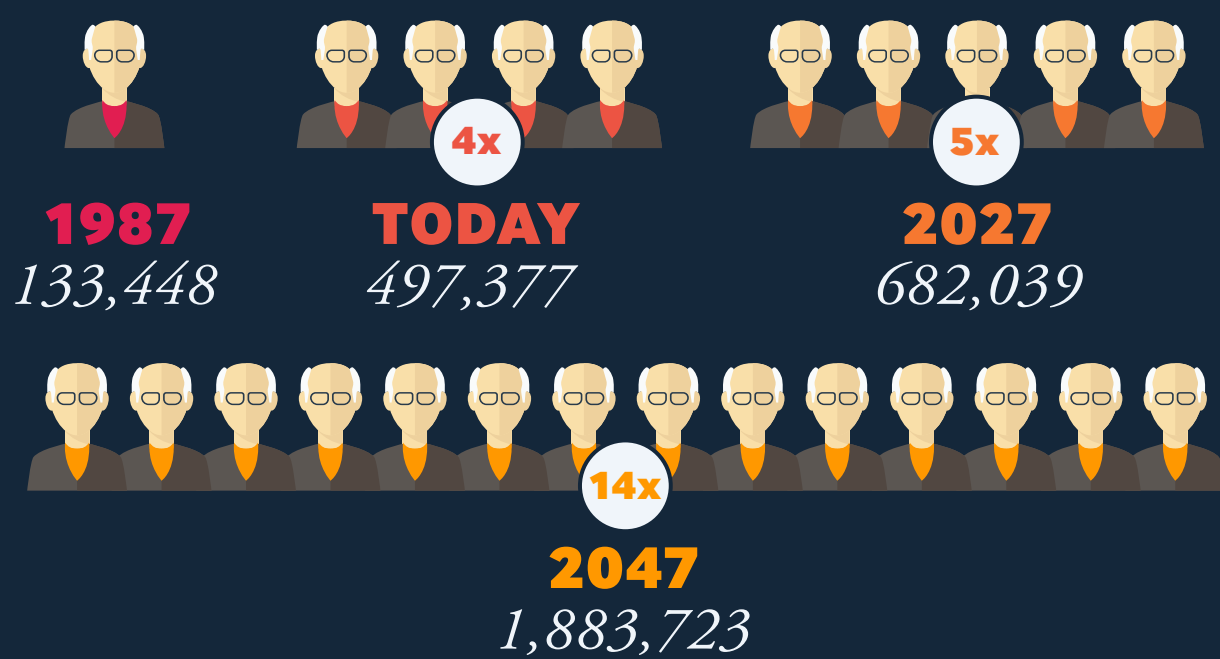
Age vs. Population (Thousands)



POPULATION BREAKDOWN



85+ POPULATION



LETTERS FROM THE QUEEN

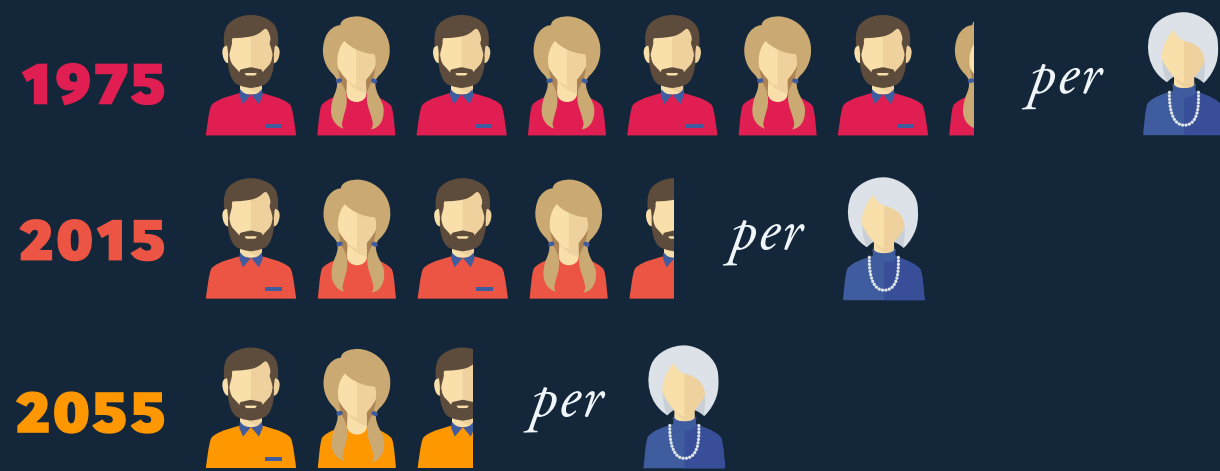
No. of Australians turning 100 (Calendar Yr)



*The year Queen Elizabeth became sovereign

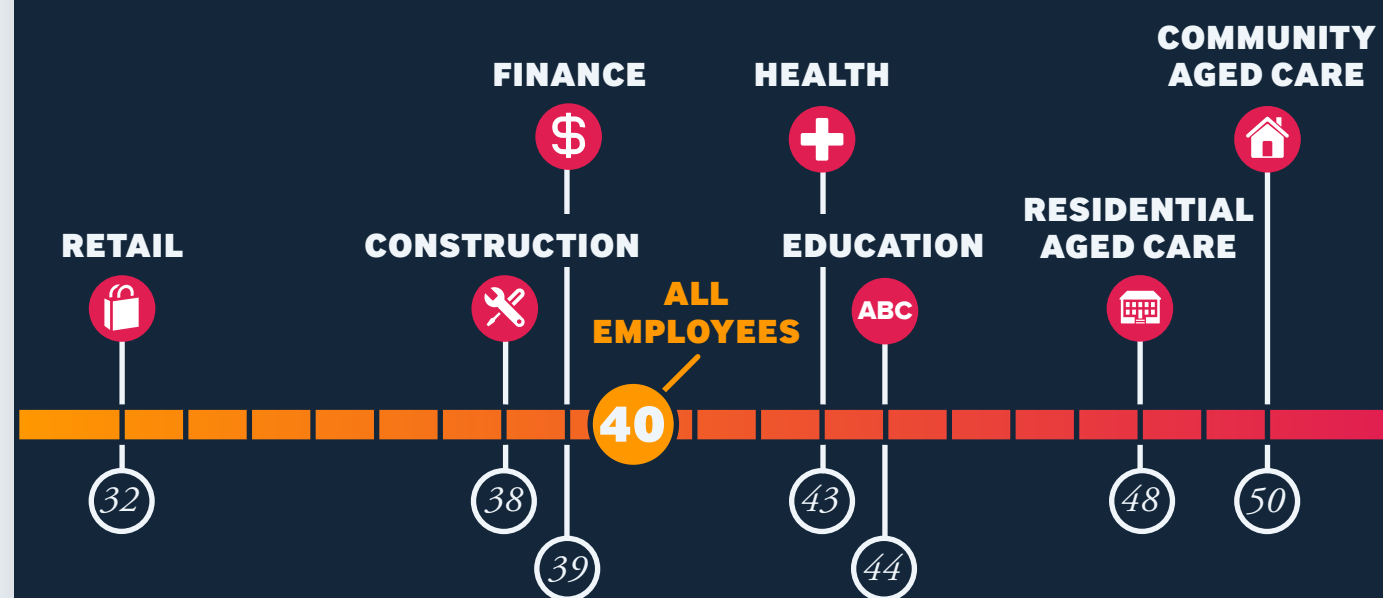
DECLINING WORKFORCE RATIO

Ratio of workers : retiree



AGEING WORKERS

Median age in workforce sectors



MASS RETIREMENT

Retiring Aged Care workforce

350,000 workers in the Aged Care sector

HALF the workforce will be of retirement age in... **15 years**

THIS EQUATES TO

11,667 retirees per year.

OR **972** farewell lunches/month for the next 15 years.

MASS RECRUITMENT

To keep the current ratio of aged care workers to people aged 85+

WE NEED TO ADD **+129,945** WORKERS IN THE NEXT 10 YEARS

THIS EQUATES TO

A RECRUITMENT GOAL OF **1083** /MONTH

+972 /MONTH to replace the retiring staff.

THIS EQUATES TO

A TOTAL RECRUITMENT GOAL OF **2055** /MONTH

adding nearly **25,000** individuals to the aged care workforce each year.

GROWING NEED

In the next 30 years Australia will have

+1,400,000 MORE PEOPLE AGED 85+

The average older Australian will live **1.5 YRS** LONGER THAN TODAY

THIS EQUATES TO

AN EXTRA **2,100,000** YEARS OF CARE